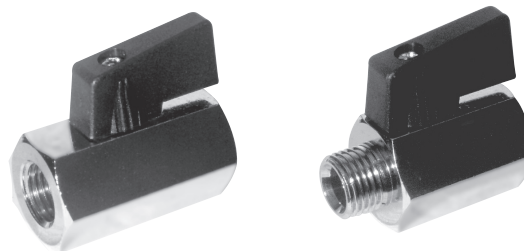


# Ancillary valves

## Miniature ball valves from brass hexagonal bar



Executions			
Version	Symbol	Code	Item
1/8" female - female black lever		030501	1MVSFF
1/4" female - female black lever		030502	2MVSFF
3/8" female - female black lever		030503	3MVSFF
1/2" female - female black lever		030504	4MVSFF
3/4" female - female black lever		030505	5MVSFF
1/8" male-female black lever		030601	1MVS MF
1/4" male-female black lever		030602	2MVS MF
3/8" male-female black lever		030603	3MVS MF
1/2" male-female black lever		030604	4MVS MF
3/4" male-female black lever		030605	5MVS MF

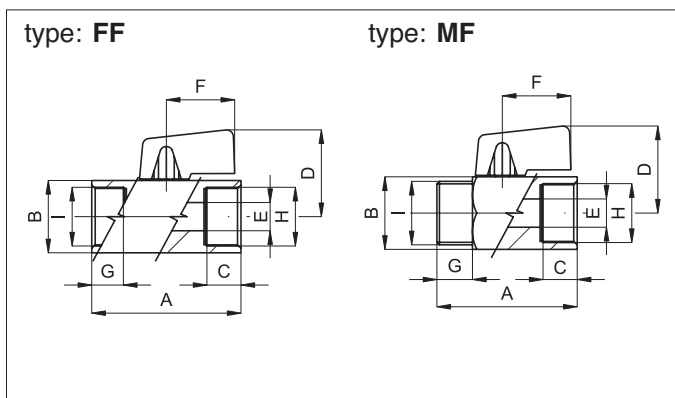


Series of miniature ball valves from brass hexagonal bar and manually operated. In line mounting they work to close or open the flow in both directions.

How to order: 1MVSFFR

1MVSFF	R
Version	Option

Options	Suffix
Red lever	R
Special versions on request	/ S



H	G	C	A	B	D	E	F
1/8"	9	9	39	21	27	6	22
1/4"	9	9	39	21	27	8	22
3/8"	10	9	41	21	27	8	22
1/2"	10,5	10,5	45	25	29	10	22
3/4"	13,5	13,5	51	30	31,5	12	22

Technical data	
Fluid	Compressed filtered air with or without lubrication
Pressure range	0 ÷ 10 bar
Temperature range	-10 °C ÷ + 90°C
Orifice	See the dimension E in the table
Mounting	In-line
Materials	Body: Nickel plated brass Lever: Nylon 66, reinforced glass      Ball: Nickel plated brass Seals: PTFE - NBR