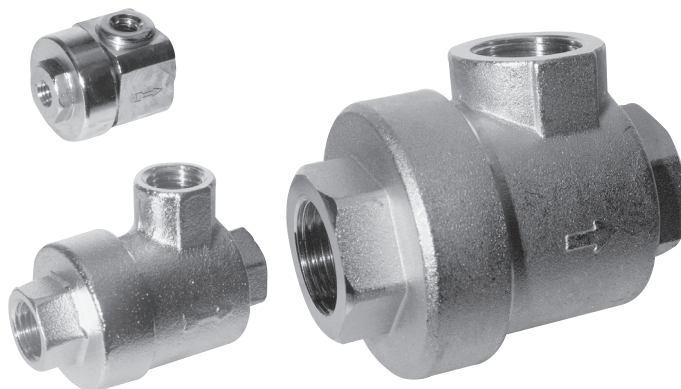


Executions			
Version	Symbol	Code	Item
M5		030806	7VSR
1/8"		030801	1VSR
1/4"		030802	2VSR
3/8"		030803	3VSR
1/2"		030804	4VSR
3/4"		030805	5VSR
3/4" maxi		030807	5VSRM
1" maxi		030808	6VSRM



Series of quick exhaust valves used to increase the speed of a cylinder.

The valve must be mounted directly on the port of the cylinder to achieve the maximum possible speed.

When the supply is in P the diaphragm closes the exhaust R and so the air flows through A into the chamber of the cylinder. When the supply in P fails the diaphragm closes P and this is due to the exhaust air from A to R. The noise of the exhaust can be reduced by a silencer.

For silencers see from page 4.0

How to order: 2VSRV

2VSR	V
Version	Option

Options	Suffix
Seals FKM max 150 °C	V
Threaded NPTF	NPT

Technical data						
Fluid	Compressed filtered air with or without lubrication					
Pressure range	1 ÷ 10 bar					
Temperature range	-20 °C ÷ + 70°C					
Orifice (mm)	1/8" = 6	1/4" = 8,5	3/4" = 8,5	1/2" = 15	3/4" = 18	1" = 24
Flow from P to A						
Flow from A to R						
Mounting	Preferably directly on the port of the cylinder					
Materials	Body: Nickel plated brass Seals: Diaphragm: Polyurethane - Washer: NBR					

